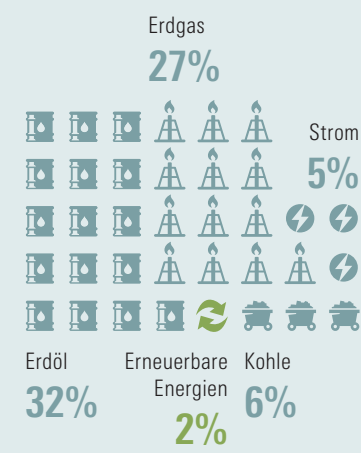
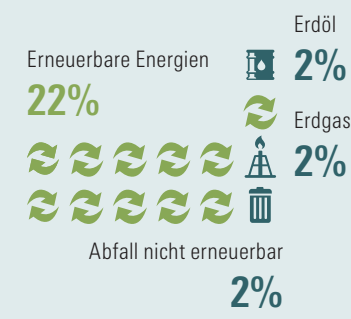


Energiefluss in Österreich 2016

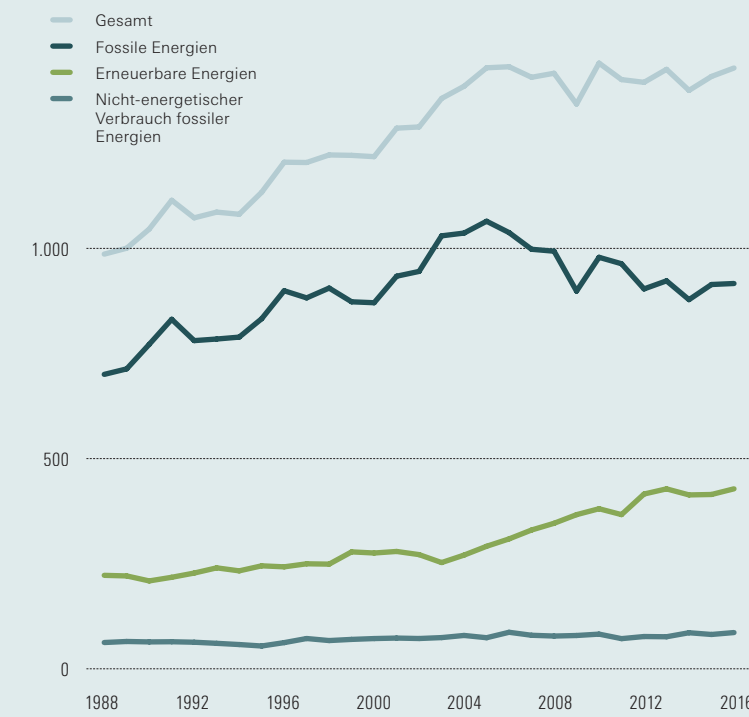
1.331 PJ
72%
Importe



526 PJ
28%
Produktion

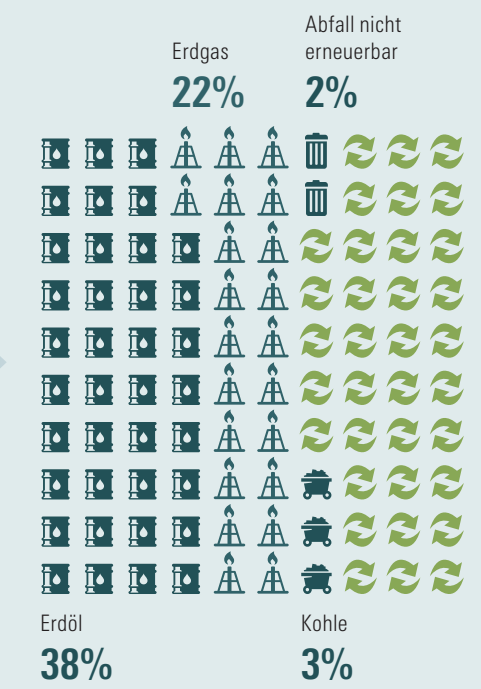


Bruttoinlandsverbrauchs 1988–2016

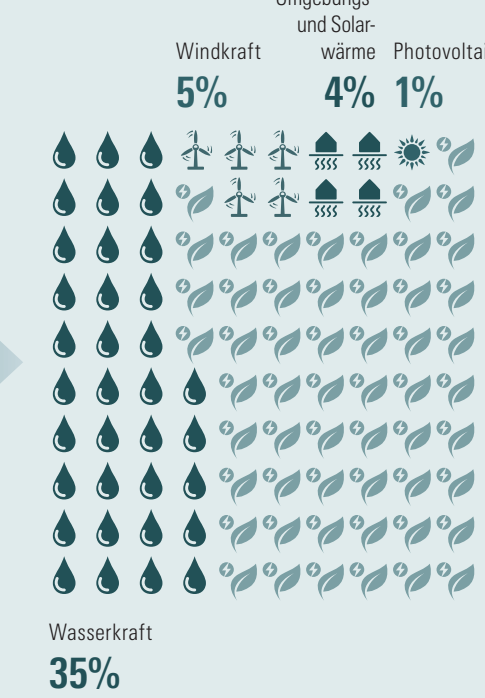


1.121 PJ
Endenergieverbrauch

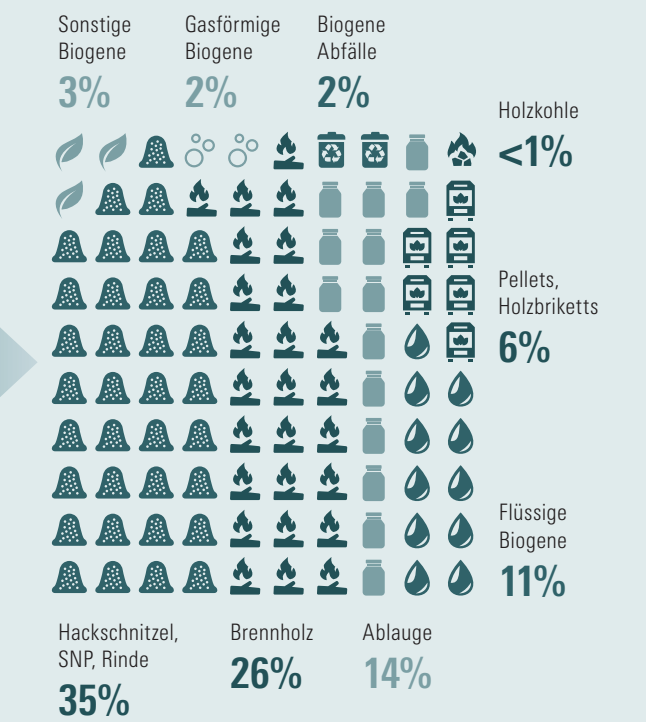
Energieträgermix: 1.121 PJ



Erneuerbare Energie: 391 PJ



Bioenergie: 217 PJ



1.858 PJ
Primärenergieeinsatz

1.435 PJ
Bruttoinlandsverbrauch

438 PJ
Exporte

85 PJ
nicht-energetischer Verbrauch

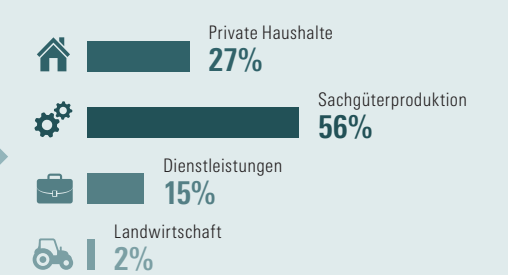
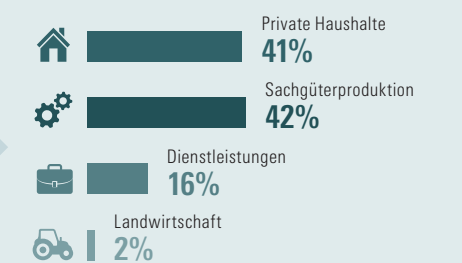
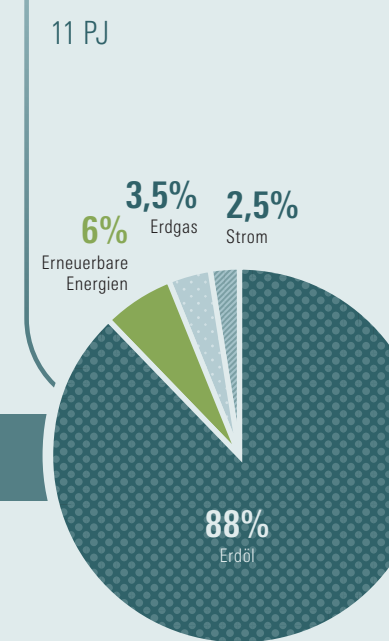
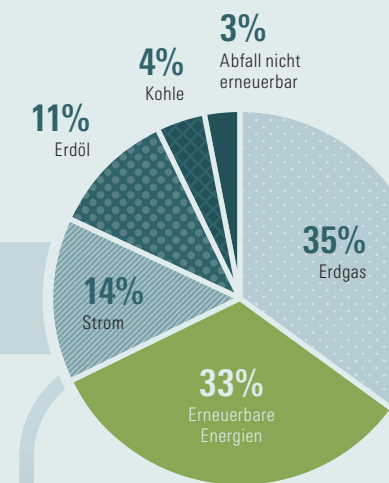
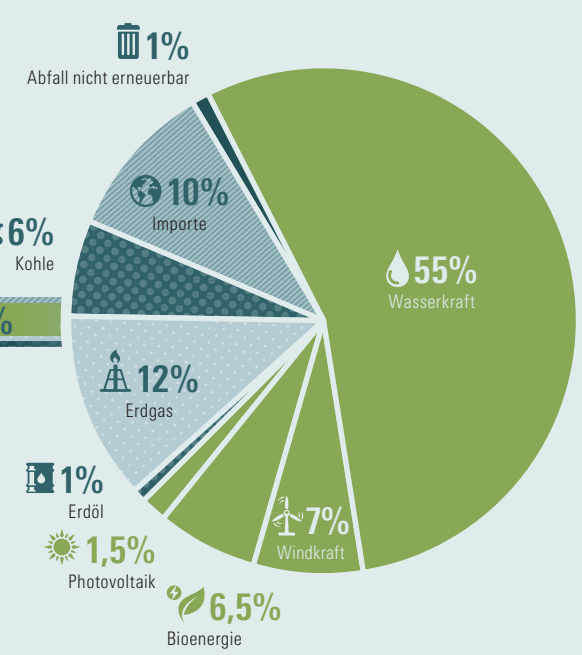
116 PJ
Umwandlungs- und Transportverluste

113 PJ
Verbrauch Energiesektor

Wärme 44%

Strom 20%

Treibstoffe 36%



- Erdöl
- Erdgas
- Abfall nicht erneuerbar
- Kohle
- Strom
- Erneuerbare Energien